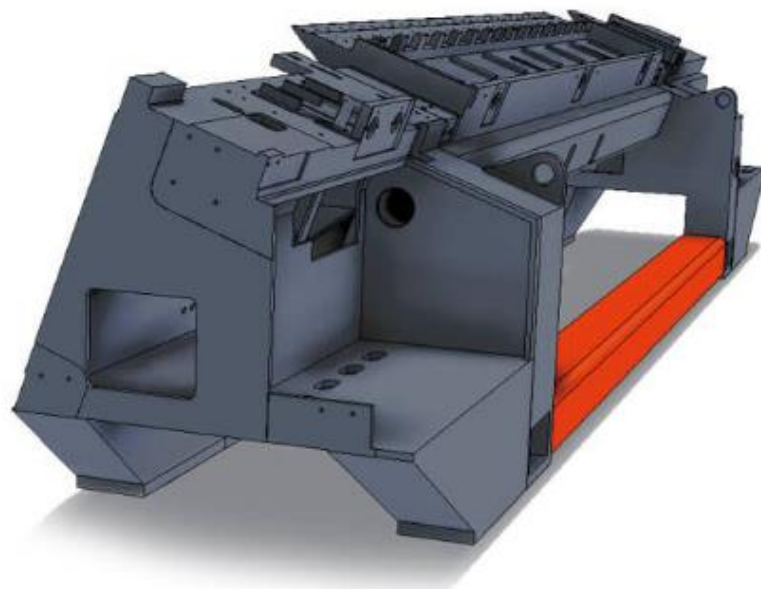


Super Zenit splitting machine.

The machine body is particularly robust and is made of **one electro-welded steel block**, which is heat treated to avoid deformations from wear. The adjustment of the distance between the blade and the transport unit (head/bench) is achieved through the machine front regulator. It is possible to vary the axis of the ring roller compared to the conveyor one, to facilitate the passage of the thickest split (**Mosconi patent**) through the regulators.

Other technical features of splitting machines.

- ◆ The splitting machine has **panels** to visualise the thickness of the processed hides and to control the grinding of the blades.
- ◆ The counter-roller unit (in the lime-split version) contrasts the bending of the rubber-coated cylinder with independent adjustments.
- ◆ The loading table is without steel sheet, to illustrate the air channelling needed to clean the bench tips and the same cutting area.
- ◆ The **wet-blue version** provides an automatic introducer, the motorisation of the joint movement of head and bench with reading of the movement on a display, and the bilateral split outfeed belt. The application of the regulator motorisation can be combined with a rear measurement bridge.
- ◆ The double counter roller unit, applied in the central area, allows the limited use of the "brackets" only on the side parts of the traction roller (where there is less wear), therefore reducing the maintenance and adjustment operations.



TECHNICAL DATA

SUPER ZENIT			1800	2300	3000	3200	3300
Working width	mm		1800	2300	3000	3200	3300
Length	mm		5060	5560	6260	6460	6460
Width	mm		1350	1350	1350	1350	1350
Height	mm		1730	1730	1730	1730	1730
Maximum installed power - 50 Hz	kW	WB	25	25	25	25	28
		TR	30	30	30	30	30
Maximum installed power - 60 Hz	kW	WB	30	30	30	30	33
		TR	36	36	36	36	36
Net weight	kg		8500	9200	10000	10100	10200