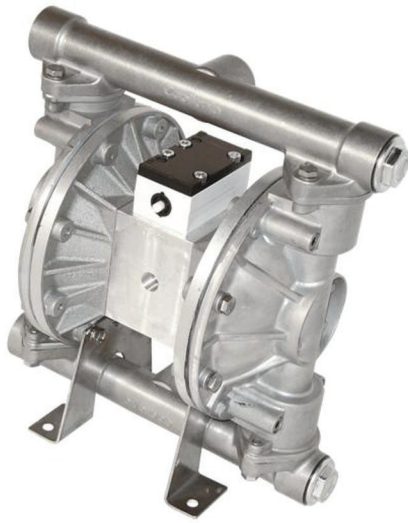


DN25 ALUMINUM (1")

PLUS

- Stainless Steel Screws
- Replaceable Inlet/Outlet valves
- Three Inlet and Three Outlet Ports for easier installations



TECHINICAL DATA

Adjustable Flow Rate

0÷120 l/min (PTFE Diaphragms)

0÷140 l/min (EPDM Diaphragms)

Inlet/Outlet Ports

1" Gas Thread (3+3)

Solids Max Size

5 mm

Max suction lift dry / wet

4 / 7 m

Air Inlet

3/8" Gas

Air Supply Pressure (Min / Max)

1 / 6.8 bar

Weight

11 Kg

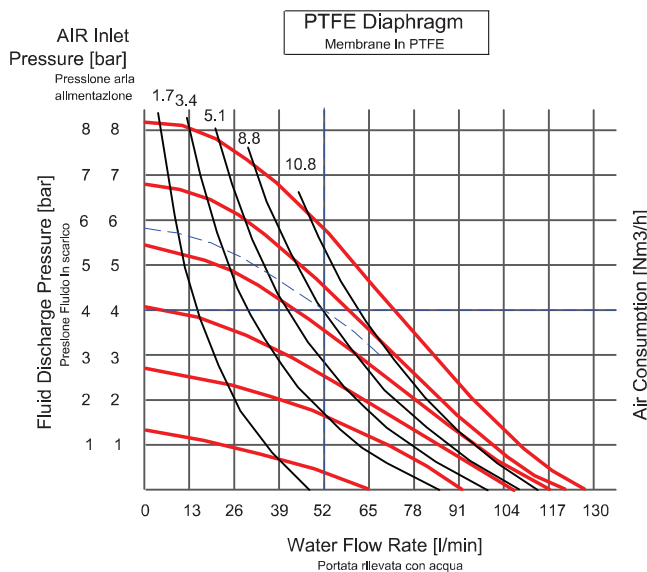
Noise Level

<78 dB [A]

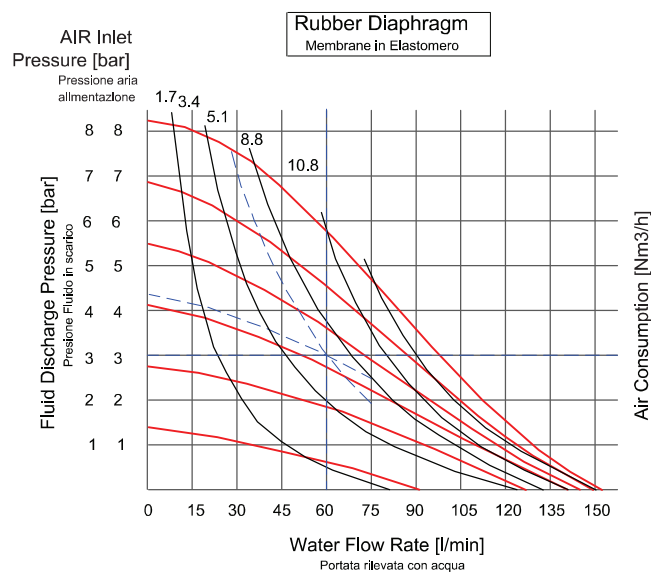
Diaphragms, gaskets, valves

Configurable based on the fluid to process

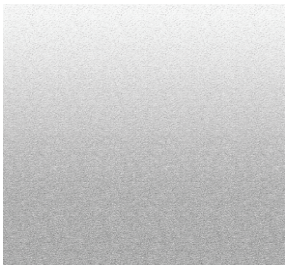
PERFORMANCE



Per pompare 52 l/min ad una pressione di 4 bar, si richiedono di 5.8 bar di alimentazione con consumo d'aria di 8.8 Nm3/h
To pump 52 lpm against a discharge pressure head of 4 bar, requires 5.8 bar and 8.8 Nm3/h air consumption.



Per pompare 60 l/min ad una pressione di 3 bar, si richiedono di 4.3 bar di alimentazione con consumo d'aria di 8.8 Nm3/h.
To pump 60 lpm against a discharge pressure head of 3 bar, requires 4.3 bar and 4.3 Nm3/h air consumption.



DIMENSIONS

