

## Small and light screw type shock absorbers

- Small-size shock absorbers with outer diameter of M10 can be handled easily in the same manner as when fitting bolts.
- They have threaded portions on the outside.
- They are small but very softly absorb impact.
- Excellent durability.

CAD/DATA  
ABSORBER/TMSFIXA is available.



- Rod cap (white) F2M10A005-C
- Rod cap (black) F2M10B005-C

### Specifications

| Model number                            |                                 | F2M10A005<br>(Standard type) | F2M10A005-C<br>(With cap) | F2M10B005<br>(Standard type) | F2M10B005-C<br>(With cap) |
|---|---------------------------------|------------------------------|---------------------------|------------------------------|---------------------------|
| Energy absorption range                 |                                 | J                            | 0.392 to 0.686            |                              | 0.588 to 0.981            |
| Stroke                                  |                                 | mm5                          |                           |                              |                           |
| Corresponding (equivalent) weight range |                                 | kg5                          |                           | 8                            |                           |
| (Note 1)                                | Max. energy capacity per minute | J/min41.2                    |                           |                              |                           |
|   | Collision speed range           | m/s1 or less                 |                           |                              |                           |
| Max. resisting force                    |                                 | N735                         |                           |                              |                           |
| (Note 2)                                | Rod returning force             | N5.88                        |                           |                              |                           |
| (Note 2)                                | Rod return time                 | s0.5                         |                           |                              |                           |
| Max. working cycle                      |                                 | times/min60                  |                           |                              |                           |
| Working temperature range               |                                 | °C−5 to +70 (No freezing)    |                           |                              |                           |
| Weight                                  |                                 | g10.2                        |                           |                              |                           |
| Accessory                               |                                 | Auxiliary stopper nut        |                           |                              |                           |

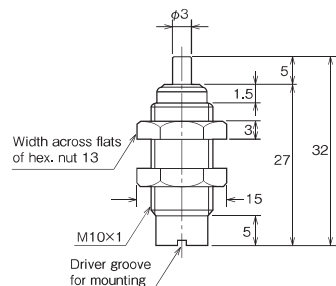
(Note 1) The max. energy capacity per minute shown in the table is the value at an ambient temperature of 26.7°C. The max. energy capacity per minute  $E_2$  (J/min) at an ambient temperature  $T$  (°C) is indicated by the following formula.

$$E_2 = \frac{(82.2 - T)}{55.5} \times \left( \begin{array}{c} \text{max. energy} \\ \text{capacity per minute} \\ \text{shown in table} \end{array} \right)$$

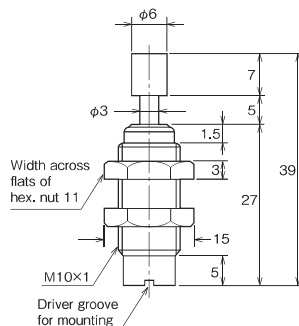
(Note 2) Maximum value when rod is retracted a stroke of 5 mm.

Unit: mm

Standard type

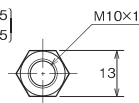


With cap



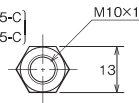
Auxiliary stopper nut **SZZ**

[For F2M10A005]  
[For F2M10B005]



Model number: SN-F3M10

[For F2M10A005-C]  
[For F2M10B005-C]



Model number: SN-F3M10-C

## Small and light screw type shock absorbers

- Small-size shock absorbers with outer diameter of M10 can be handled easily in the same manner as when fitting bolts.
- They have threaded portions on the outside.
- They are small but very softly absorb impact.
- Excellent durability.

CAD/DATA  
ABSORBER/TMSFIXA is available.



- Rod cap (white) F3M10A008-C
- Rod cap (black) F3M10B008-C

### Specifications

| Model number                            |                                 | F3M10A008<br>(Standard type)                   | F3M10A008-C<br>(With cap) | F3M10B008<br>(Standard type) | F3M10B008-C<br>(With cap) |
|---|---------------------------------|--|---------------------------|------------------------------|---------------------------|
| Energy absorption range                 |                                 | J  | 0.392 to 0.981            | 0.785 to 1.47                |                           |
| Stroke                                  |                                 | mm   | 8                         |                              |                           |
| Corresponding (equivalent) weight range |                                 | kg   | 7                         | 10                           |                           |
| (Note 1)                                | Max. energy capacity per minute | J/min  | 58.8                      |                              |                           |
| Collision speed range                   |                                 | m/s  | 1 or less                 |                              |                           |
| Max. resisting force                    |                                 | N  | 735                       |                              |                           |
| (Note 2)                                | Rod returning force             | N  | 5.88                      |                              |                           |
| (Note 2)                                | Rod return time                 | s  | 0.5 or less               |                              |                           |
| Max. working cycle                      |                                 | times/min                                      | 60                        |                              |                           |
| Working temperature range               |                                 | °C   | −5 to +70 (No freezing)   |                              |                           |
| Weight                                  |                                 | g  | 13                        |                              |                           |
| Accessories                             |                                 | Auxiliary stopper nut, eccentric angle adapter |                           |                              |                           |

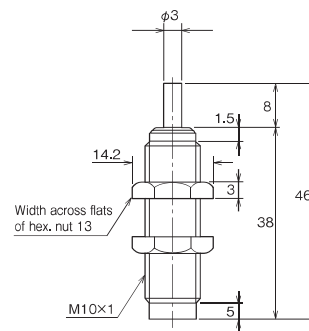
(Note 1) The max. energy capacity per minute shown in the table is the value at an ambient temperature of 26.7°C. The max. energy capacity per minute  $E_2$  (J/min) at an ambient temperature  $T$  (°C) is indicated by the following formula.

$$E_2 = \frac{(82.2 - T)}{55.5} \times \left( \begin{array}{c} \text{max. energy} \\ \text{capacity per minute} \\ \text{shown in table} \end{array} \right)$$

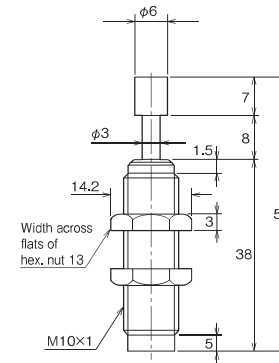
(Note 2) Maximum value when rod is retracted a stroke of 8 mm.

Unit: mm

Standard type

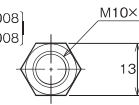


With cap



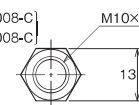
Auxiliary stopper nut **SZZ**

[For F3M10A008]  
[For F3M10B008]



Model number: SN-F3M10

[For F3M10A008-C]  
[For F3M10B008-C]



Model number: SN-F3M10-C

- For the dimensional drawing of the eccentric angle adapter, see the Accessories on page EG80.